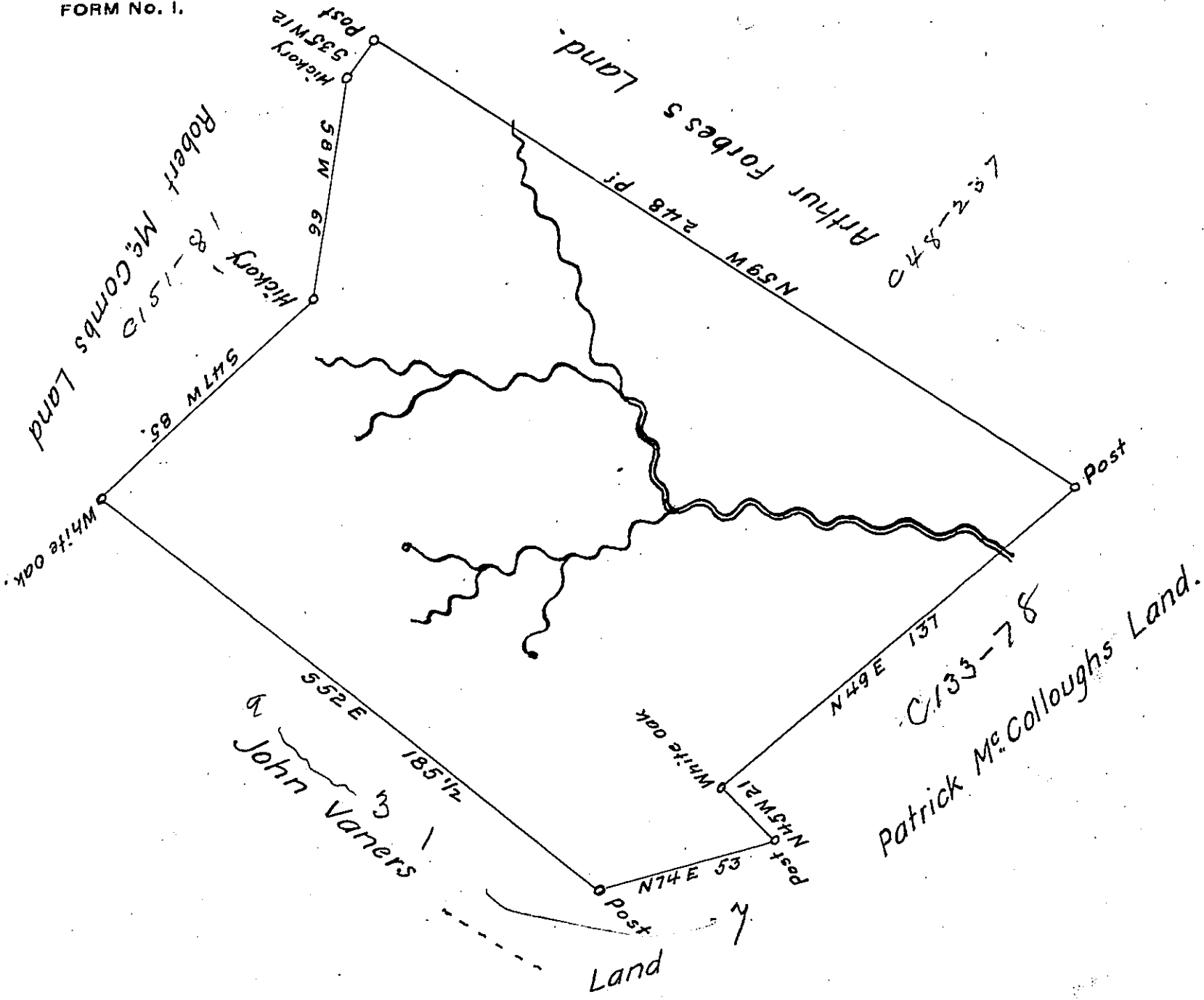


FORM NO. 1.



The above is a draught of a tract of Land Situate on the Waters of Pidgeon Creek Surveyed June 28<sup>th</sup> 1787 in pursuance of a Warrant Granted Patrick Scott August 29<sup>th</sup> 1786 Call<sup>d</sup>. Camel Containing 204<sup>1</sup>/<sub>2</sub> Acres and allowance of 6 <sup>ff</sup>/<sub>100</sub> Cent. ~

In<sup>o</sup> Hoge D.S.

John Lukens Esq: S: G: }  
State of Penn<sup>y</sup>: ~ }

IN TESTIMONY that the above is a copy of the original remaining on file in the Department of Internal Affairs of Pennsylvania, made conformably to an Act of Assembly approved the 16th day of February, 1833, I have hereunto set my Hand and caused the Seal of said Department to be affixed at Harrisburg, this sixteenth day of November 1906

*Isaac R. Brown*  
Secretary of Internal Affairs.